

## Access Institute of Technology

34 + Years of Excellence in CAD CAM CAE Training & Placements  
[www.aitnashik.com](http://www.aitnashik.com), [www.accesscadd.com](http://www.accesscadd.com)

# Access Institute Of Technology

AIT is an educational wing of Access – Group. We offer professional training on high end CAD CAM CAE applications to Engineers from Mechanical – Civil – Electrical Domain. We conduct on Client Site - Corporate Training programs for tools like Catia, Creo, NX, Ansys, Auto-CAD, Revit, STAAD-Pro, SDS2 and GD&T.

AIT has a specially crafted Skill Enhancement Programs for Engineering & Polytechnic colleges to help their students learn the CAD CAM CAE applications in sync with the industrial standard guidelines. For customized requirements our Individual specific Domain / Combo / Single Package courses Conducted in well equipped in-house CAD labs.

## Why AIT

Experience With the training faculties having 34+ years of teaching experience, we have trained over 30,000 students including In-college training. As part of our On-Client Site Corporate training program, we have conducted over 500+ sessions for 3000+ working professionals. As a sales channel partner for CAD applications, we have successfully implemented CAD and PLM applications in major industries.

### CUSTOMIZED COURSE MODULES

CAD CAM CAE tools are widely used in various engineering sectors ranging from Automobile, Aerospace and Industrial Machinery Instrumentation. Apart from our Basic and Advanced courses, we customize the course applications and contents to match the requirement of Industry and Individual.

### INDIVIDUAL TRAINING

As a fact no two individuals can learn at the same pace. At AIT, we focus on individual training instead of fixed group sessions. This helps our student to learn at his own pace and also provides them time flexibility in attending the training sessions.

### PRACTICE PRACTICE AND MORE PRACTICE

Practice Practice and More Practice is the only way to master the CAD CAE applications. Apart from regular practice sessions, students are allowed & encouraged to use our facility for extended practice sessions.

### AFFORDABILITY

Our specially designed courses are a value for money. We consider discounts in case of group joining for a strength of minimum of 5 students.

## Why Domain Centric Training

The Engineering Design outsourcing Business is growing at a good pace, but the shortage of Domain skilled E R/D Engineers across industries is emerging as a Significant challenge to Indians growth in Product Development feature.

To bridge the skill gap we impart Domain Centric Training Modules with Tools Automotive - CATIA Trims Plastic - NX Industrial Machinery - CREO (Pro) Steel Structure - SDS2 Analytical Systems- ANSYS / STADD Pro

### SKILL DEVELOPMENT & PLACEMENT SUPPORT

#### 1. Get Armed

As an engineering Graduate, we groom students in Problem solving & Analytical Skills with Product Development Tools. (CAD CAM CAE)

#### 2. Get some experience

With Hands on Live Project we overcome Employers expectation with practical experience.

#### 3. Aim high – but keep your horizons broad

We guide Students to aim high but start with deserving opportunities.

**4. NASSCOM ENGINEERING FORUM** Guidelines We make our students well equipped to join Global Engineering Services Companies-India's Next frontier in Engineering Design & Development.

#### 5. Tailor your Resume

Our students resume outstand among others in additional Skill Development & Domain Expertise.

#### 6. Don't give up

We initiate Contractual On Site Placement as your first job.

## Career Opportunities

### Domestic Design & Development

Today every MSB & MNC have dedicated R/D Department with Latest CAD CAM CAE Technology to serve Global Needs of Digital Manufacturing for, Indian R/D: Develop indigenized Products.

**Technology cell** : Transfer global design to domestic

### ERD (Engineering Research & Development)

#### TODAYS ERD POSITION

**400+** Number of service providers and captives offering ER&D services from India.

**480k** Number of engineers employed by service providers and captives in India.

**01** India's position in Global E R&D Landscape

### JOB OPPORTUNITIES

INDIAN offshore market is expected to reach \$37-45 Billion By 2020  
Newer Verticals & Markets - Infrastructure, Automotive, Aerospace, Energy & MFG.

Engineering services to create 1mn additional jobs in India by 2020  
Nasscom says faster time-to market, shorter product lifecycle aiding offshore ER&D



## Affiliates / Associates



## Technology we Offer



## Mechanical - Electrical : Successful Students Working With



## Civil : Successful Students Working With



## College MOU :



\*All logos & trademarks used are property of respective owners.

## Placement Modules : MECHANICAL

GOVERNMENT  
CERTIFIED



### Diploma in Automotive Product Design & Development

Duration: 6 Months Eligibility: BE / ME Software : CATIA / NX / ANSYS  
Syllabus : Part Design / Assembly / Drawings / GSD Surfaces / BIW (Sheet Metal) / Trims Plastics / Structural - Thermal Analysis / PLM / GD&T / 3D Printing / Design Guidelines / Industrial Visit / Projects

### Certificate Course in Automotive Design (BIW)

Duration: 4 Months Eligibility: BE / ME Software : CATIA / NX  
Syllabus : Part Design / Assembly / Drawings / GSD Surfaces / BIW (Sheet Metal) / PLM / GD&T / 3D Printing / Design Guidelines / Industrial Visit / Projects



### Certificate Course in Trims & Plastic

Duration: 4 Months Eligibility: BE / ME Software : CATIA / NX (UG)  
Syllabus : Part Design / Assembly / Drawings / GSD Surfaces / Interior Trim / PLM / GD&T / Design Guidelines / 3D Printing / Industrial Visit / Projects

## Diploma in CAD CAM CAE

Duration: 4 Months Eligibility: DME / BE / ME  
Software : CATIA / NX / CREO / ANSYS / AutoCAD  
GD&T / Design Guidelines / 3D Printing / Industrial Visit / Projects



## CAD - CAM - CAE Professional : Mechanical

**CATIA NX (UG) NXCAM CREO ANSYS AutoCAD**

Duration: 2 Months Each Software Eligibility: DME / BE / ME

## Placement Modules : CIVIL - Architecture

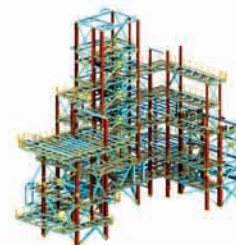


### Diploma in Building Structures

Duration: 4 Months Eligibility: DCE / BE / ME  
Software : AutoCAD Civil / REVIT / SDS2 / STAAD  
Design Guidelines / Industrial Visit / Projects

### Certificate Course in Steel Detailing

Duration: 3 Months Eligibility: DCE / BE / ME  
Software : SDS2 / Advance SDS2 / AISC Code (DTS)  
Syllabus : AISC DTS Training / Steel Structure Modeling / Detailing / Erection / Design Guidelines / Site Visit / Projects



## CAD / CAE Professional : Civil

**AutoCAD Civil SDS2 STAAD ANSYS REVIT SketchUP**

Duration: 2 Months Each Software Eligibility: DCE / BE / ME

## Placement Modules : ELECTRICAL - E&TC



### Certificate Course in Electrical Design

Duration: 3 Months Eligibility: DEE / BE / ME Software : AutoCAD / EPLAN / CREO  
Syllabus : Electrical Panel Drawings (GA) / EPLAN / Symbols / Layout / Schematics / Bom  
3D Modeling (Panel) / Assembly / Drawings / Design Guidelines / Intro. of PLC / Industrial Visit / Projects

### Certificate Course in PLC & Automation

Duration : 2 Months Eligibility : BE / DEE  
PLC / HMI : Mitsubishi , Allen Bradley , Delta , Siemens  
Syllabus : Electrical Fundamental / PLC Theory / Basics of PLC / Advance PLC Programming / HMI (Human Machine Interface) / Site Visit / Projects



## CAD / CAE Professional : Electrical

**AutoCAD EPLAN CREO CATIA**

Duration: 2 Months Each Software Eligibility: DEE / BE / ME





**Engineers Successfully Working in**



500 + Recruiters

20000 + Placements



Help 100 + StartUps

\*All logos & trademarks used are property of respective owners.



**Access Institute of Technology**

2nd Floor, Guru Ashish, Opp. BSNL Canada Corner, Nashik 422 002. Tel : +91 253 2314264  
Mob. : 098231 98804. Email : training@aitnashik.com

9823198804

:<https://www.facebook.com/accesscad> :<https://www.instagram.com/accesscadd>

